



CDVI

Security to Access



CZ3000

Self-aligning Magnetic Shearlock
Ventouse à cisaillement et à auto-alignement



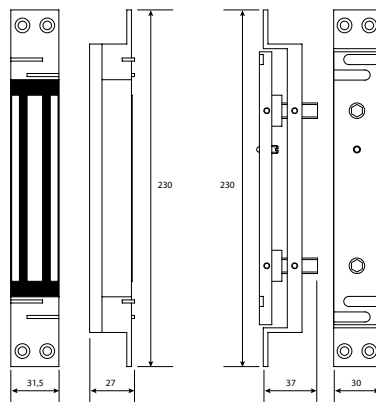
EN **FR**

1] PRODUCT OVERVIEW

The CZ3000 is a Shear maglock with a patented self-aligning mechanism. This magnet is mortice and monitored as standard and can be surface mounted (Surface housing kit). The maglock can be mounted on any type of doors (vertical or horizontal mount). Its reversibility enables you to choose between a door leaf or a door jamb mounting.

Technical specifications

- **1500 daN holding force:** 1500 KG in shear holding.
- **Self aligning**
- **Kick off spring**
- **Form C output (monitoring)**
- **Finish:** aluminium/steel
- **Built in varistor**
- **Input voltage:** 12 or 24 V DC.
- **Consumption:**
 - 12 V DC / 450mA,
 - 24 V DC / 225mA.



CE D0160D Aerospace Standard Certified

PATENTED BREVETE

2] RECOMMANDATIONS

Wiring

Do not put the cable near a mains voltage installation (e.g.: 230 V AC).

Mounting

It is imperative to maintain the gap 2mm between the magnet and the armature plate.

Suggested power supplies

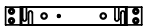



These power supplies are recommended with the CZ3000 (for more information visit our website at www.cdvi.com):

- ADC335
- ADC612SB

Optional

Surface housing (Reference: KCZ3000).

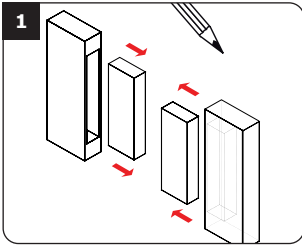
3] MOUNTING KIT

			
Armature plate CZ3000	FHC Screws (M5x20)	Allen key	Mounting plates
1	8	1	2

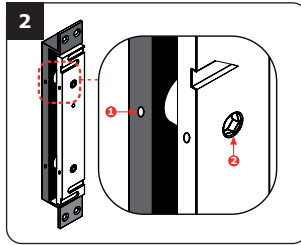
4] MOUNTING INSTRUCTIONS

Make sure that there are no pieces missing in the mounting kit. Use the correct tools according to the installation type (Drill, screw drivers, metre tape,...) and follow the mounting instructions of the CZ3000.

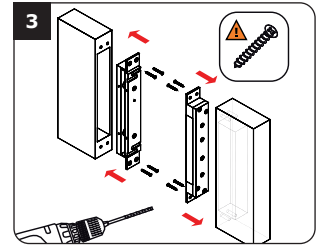
A - Wooden door



Cut the holes on the door leaf and on the door jamb in order to insert the magnet and the armature plate of the CZ3000 magnet. Then mark the mounting holes of the mounting screws. Drill the mounting holes of the magnet and of the armature plate in order to fix with the supplied screws. Drill the cable access hole.

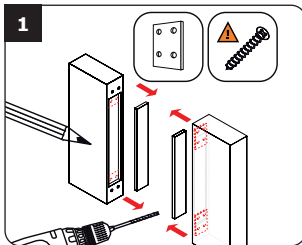


Insert the cable of the magnet. Loosen the screws on the side of the armature plate (1) with the Allen key. Temporarily mount the CZ3000. Then adjust the gap between the magnet and the armature plate by adjusting the top screws on the armature, allow 2mm distance maximum. Tighten the 2 screws on the side of the armature plate (2) once the test on the magnet has been successful.

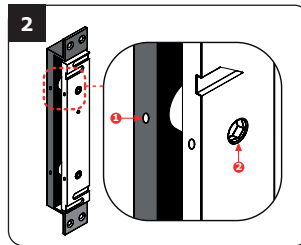


Test the functioning of the armature plate and the back plate, then fix the magnet to the door (note that the mounting screws are not included).

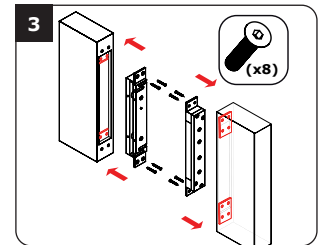
B - Aluminium door



Cut the holes on the door leaf and on the door jamb in order to insert the magnet and the armature plate of the CZ3000 magnet. Then mark the mounting holes of the mounting screws and drill the mounting holes of the magnet and of the armature plate in order to fix with the supplied screws.

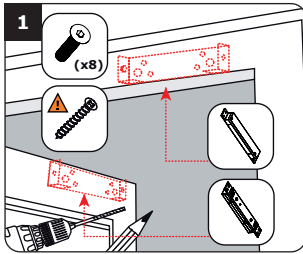


Mount the back plate of the housing (note that the screws are not included). Loosen the screws on the side of the armature plate (1) with the Allen key. Temporarily mount the CZ3000. Then adjust the gap between the magnet and the armature plate by adjusting the top screws on the armature, allow 2mm distance maximum. Tighten the 2 screws on the side of the armature plate (2) once the test on the magnet has been successful.



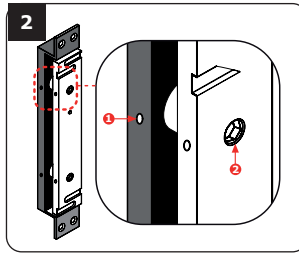
Place the magnet on the back plate of the surface housing as well as the armature on the second back plate of the surface housing and fix the magnet on the door.

C - Surface mount (Optional: KCZ3000 kit)

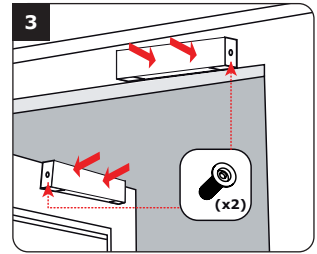


Measure and mark the center lines to determine the magnet position on the jamb and the armature plate on the door leaf frame. Then drill the fixing screw holes to fix the screws easily.

Important: The surface housing can be mounted in horizontal or in vertical in the secure side.



Mount the brackets of the housing on the jamb and on the door leaf. Insert the cable and temporarily fix the magnet and the armature plate to the bracket of the housing. Loosen the screws on the side of the armature plate (1) with the Allen key. Then adjust the gap between the magnet and the armature plate by adjusting the top screws on the armature, allow 2mm distance maximum. Tighten the 2 screws on the side of the armature (2) once the test on the magnet has been successful.

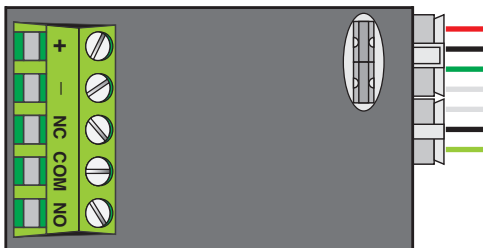
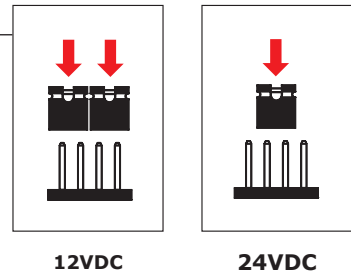


Fix the magnet on the door and place the housings.

5] WIRING DIAGRAM

Terminal block

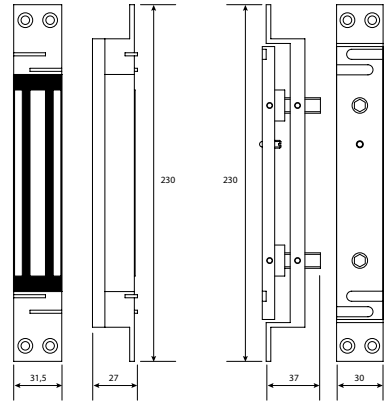
- + Input voltage 12 V or 24 VDC*
- Input voltage 12 V or 24VDC*
- NC Normally closed contact
- C Common
- NO Normally open contact



*** Input voltage: 12 VDC or 24 VDC**
The magnet can be powered in 12 VDC or in 24 VDC according to the jumper settings.

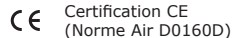
1] PRESENTATION DU PRODUIT

La CZ3000 est une ventouse à cisaillement équipée du nouveau procédé d'auto-alignement par ailette et fentes de guidage. Cette ventouse, disponible en version encastrée ou saillie (kit en option), est pourvue des dernières technologies de la métallurgie favorisant le positionnement sur la majorité des huisseries ou portes (en vertical ou à l'horizontal). Sa réversibilité vous permettra de privilégier le raccordement le plus approprié (sur la partie fixe ou mobile).



Caractéristiques techniques

- **D'une force de 1500 daN** : 1,5 tonne en cisaillement.
- **Auto-alignement.**
- **Dispositif d'anti-rémanence.**
- **Relais de position.**
- **Varistance intégrée.**
- **Finition** : aluminium/acier
- **Alimentation** : 12 ou 24 V DC.
- **Consommation** :
 - 12 V DC / 450 mA,
 - 24 V DC / 225 mA.



2] RAPPELS ET RECOMMANDATIONS

Rappel de câblage

Attention de ne pas passer vos fils à proximité de câbles «Courant fort» (ex: 230 V AC).

Option

Kit de mise en saillie en option (sur demande - Réf : KCZ3000).

Alimentations préconisées

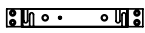



Il existe deux alimentations adaptées pour la CZ3000 (Voir www.cdvgroup.com) :

- ADC335
- ADC612SB

Montage

Laissez impérativement une distance <3 mm entre la ventouse et la contreplaque.

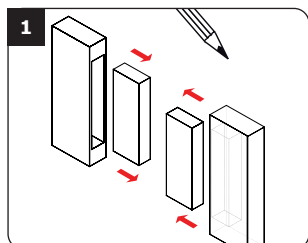
3] KIT DE MONTAGE

			
Contreplaque CZ3000	Vis FHC à tête fraisée (M5x20)	Clé 6 pans pour vis CHC	Patte de mise en affleurement
1	8	1	2

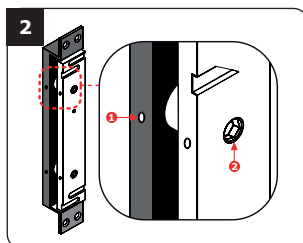
4] MONTAGE

Après avoir vérifié que le kit de montage est complet, vous allez pouvoir procéder à l'installation finale du produit. Réunissez le matériel approprié (Perceuse, tournevis, mètre,...) et suivez les recommandations de montage de la CZ3000.

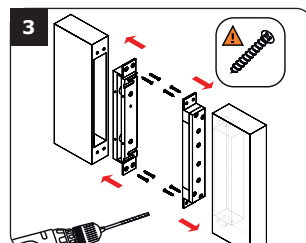
A - Montage sur surface pleine



Découpez dans la surface déterminée une partie creuse qui va accueillir la ventouse CZ3000 et son armature. Puis faites les marquages de la position des vis de fixation. Percez la surface au niveau des entraxes de la ventouse et de son armature pour faciliter le vissage. Percez le fond de la surface découpée afin de passer les câbles.

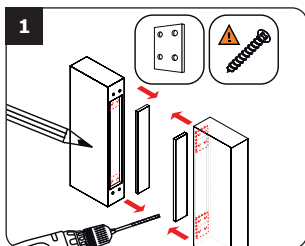


Passez vos fils, et branchez la ventouse. A l'aide de la clé fournie dévisser les 2 écrous de blocage (1). Puis avec une clé 6 pans, ajuster la contre-plaque à 2 mm de la ventouse. Resserrer ensuite les 2 écrous de blocage (2).

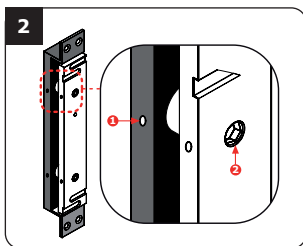


Testez le fonctionnement de la ventouse et de la contre-plaque puis fixez-les (attention les vis de fixation ne sont pas fournies).

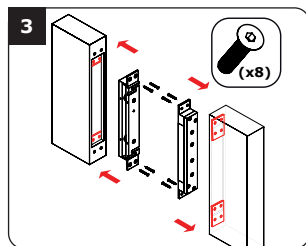
B - Montage sur profilé



Découpez dans le profilé la surface déterminée qui va accueillir la ventouse CZ3000 et son armature. Faites les marquages de la position des vis de fixation puis percez la surface au niveau de la fixation de la ventouse pour faciliter le vissage. ensuite, fixez les pattes de mise en affleurement (attention les vis de fixation ne sont pas fournies).

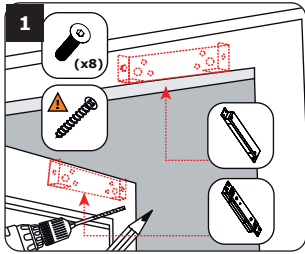


Passez vos fils, et branchez la ventouse. A l'aide de la clé fournie dévisser les 2 écrous de blocage (1). Puis avec une clé 6 pans, ajuster la contre-plaque à 2 mm de la ventouse. Resserrer ensuite les 2 écrous de blocage (2).



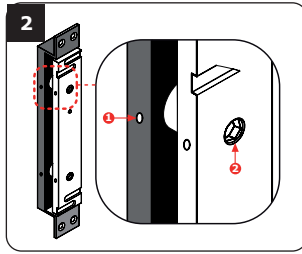
Testez le fonctionnement de la ventouse et de la contre-plaque puis fixez-les aux pattes de mise en affleurement.

C - Montage en saillie (Option : Kit KCZ3000)

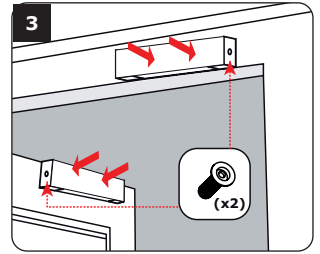


Faites les marquages des entraxes de la ventouse sur le dormant et de la contre-plaque sur l'ouvrant puis percez la surface pour faciliter le vissage.
Important : le kit de mise en saillie doit se poser en horizontal ou en vertical sur une porte s'ouvrant vers l'intérieur.

Faites sortir le câble d'alimentation et fixez les éléments du kit sur le dormant et l'ouvrant.



Branchez la ventouse, puis à l'aide de la clé fournie dévissez les 2 écrous de blocage (1). Puis avec une clé 6 pans, ajuster la contre-plaque à 2 mm de la ventouse. Resserrer ensuite les 2 écrous de blocage (2).

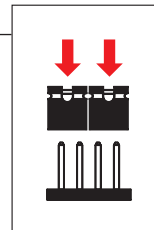
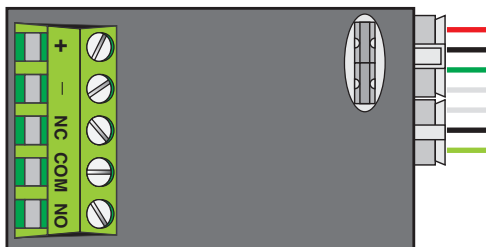


Testez le fonctionnement de la ventouse et de la contre-plaque puis fixez-les sur le kit du dormant et de l'ouvrant. Pour finaliser l'installation, vissez la partie supérieure des kits.

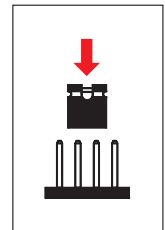
5] SCHÉMA DE RACCORDEMENTS

Bornier 5 points

+	Alimentation 12 V ou 24 V DC *
-	Alimentation 12 V ou 24V DC *
NC	Contact «Normalement Fermé»
COM	Commun du relais 1
NO	Contact «Normalement Ouvert»



12 V DC



24 V DC

* **Alimentation : 12 V DC ou 24 V DC**
 En fonction du placement des cavaliers vous alimentez votre ventouse en 12 V DC ou en 24 V DC.



CDVI Group

FRANCE (Headquarters)

Phone: +33 (0) 1 48 91 01 02

.....

CDVI FRANCE + EXPORT

+33 (0) 1 48 91 01 02

www.cdvi.com

CDVI AMERICAS [CANADA - USA]

+1 (450) 682 7945

www.cdvi.ca

CDVI BENELUX [BELGIUM - NETHERLANDS - LUXEMBOURG]

+32 (0) 56 73 93 00

www.cdviBenelux.com

CDVI TAIWAN

+886 (0) 42471 2188

www.cdviChina.cn

CDVI SUISSE

+41 (0) 21 882 18 41

www.cdvi.ch

CDVI CHINA

+86 (0) 10 84606132/82

www.cdviChina.cn

CDVI IBÉRICA [SPAIN - PORTUGAL]

+34 (0) 935 390 966

www.cdviIberica.com

CDVI ITALIA

+39 (0) 321 90 573 - www.cdvi.it

CDVI MAROC

+212 (0) 5 22 48 09 40

www.cdvi.ma

CDVI NORDICS [SWEDEN - DENMARK - NORWAY - FINLAND]

+46 (0) 31 760 19 30

www.cdvi.se

CDVI UK [UNITED KINGDOM - IRELAND]

+44 (0) 1628 531300

www.cdvi.co.uk

CDVI POLSKA

+48 (0) 12 659 23 44

www.cdvi.com.pl

All the information contained within this document (pictures, drawings, features, specifications and dimensions) could be perceptibly different and can be changed without prior notice.